



Ethiopian Education Network to Support Agricultural Transformation (EENSAT): *Research* By: *Daniel Teka (PhD)*

EENSAT Project Kick-off workshop, 05 October 2017, Gulele Botanical Garden, Addis Ababa



Introduction

Background

- ❖ There is a lack of shared vision on research between the partners
- ❖ Within a network it is important to make optimal use of resources and to come to a research program that produces quality output that can influence policy decisions and is in line with market and development priorities



Intro...

Outcome 2: research

- ❖ At the end of the project a network of at least **three public** universities is established with the capability to implement and sustain a **coherent and applied GI-based** research program that aligns with GTP development priorities.



Intro...

- 18 staff enrolled for MSc studies in line with the gender policies of the partner universities by the end of the second project year,
- 9 staff enrolled for PhD studies in line with the gender policies of the partner universities by the end of the first project year,
- An applied and coherent research program is developed by the end of the first project year,
- By the end of the project, 9 PhD and 18 MSc candidates have initialized or completed their research within the coherent research program,
- A course module on research skills is developed by the end of the first project year.



Output 2.1 - design research programme

- ❖ A joint research agenda developed
- ❖ A shared and applied research program established that feeds into education and studies food security and associated themes such as water resources assessment, disaster risk management, climate change, land administration, etc.
- ❖ Investments made in support of relevant research activities



Output 2.2 - implementation of research programme

- ❖ integrated MSc and PhD research ongoing between the partners
- ❖ Linkage between MSc research at ITC and research program established



Output 2.3 - research skills

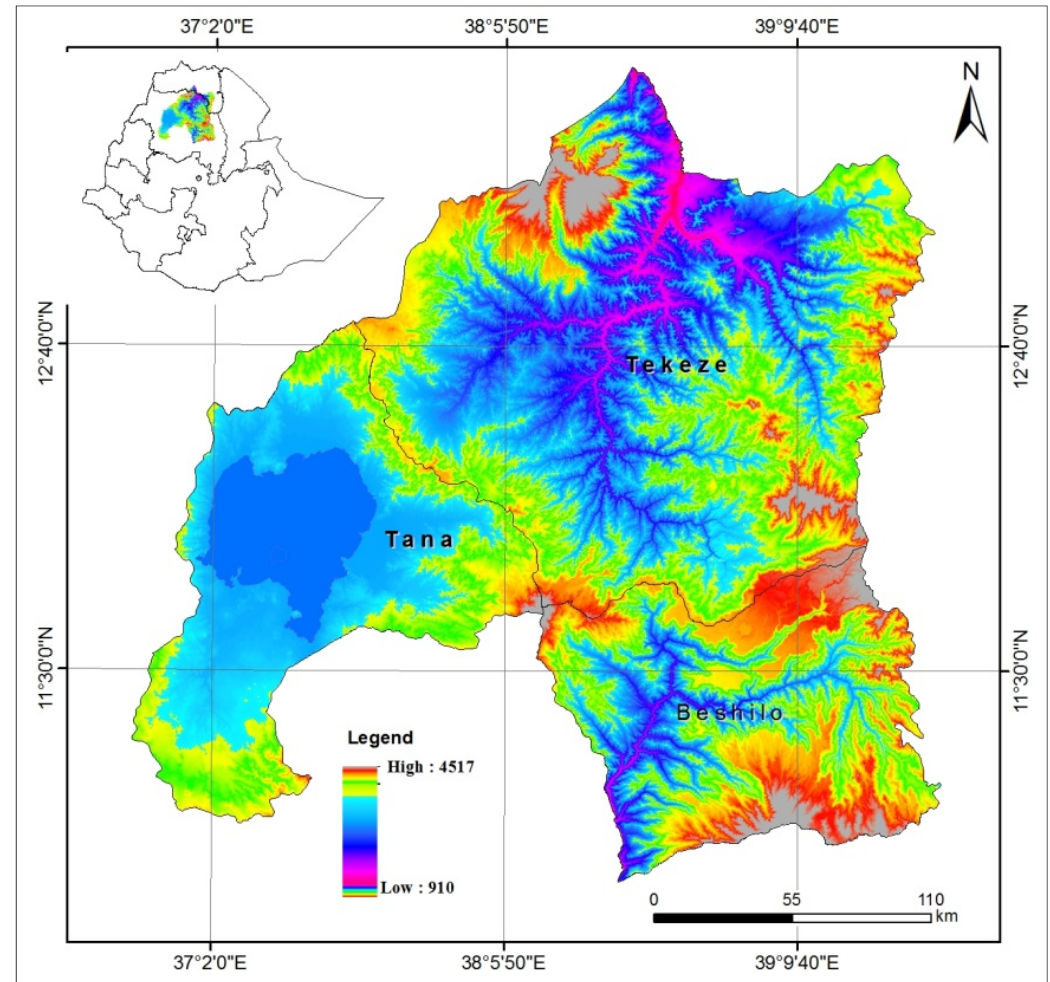
- ❖ Shared short course modules in basic research skills and research support modules at Master level established.



Study Area

❖ Description

❖ Three Sub-Basins



Research Topics

❖ AAU

- Sustainable Land Management and Food Security Nexus: GIS-based Community Mapping in Beshelo Watershed, Nile Basin, Ethiopia
- Converging food, soil, and nutrition for a healthier food system in rural Ethiopia



Research Topics...

❖ BDU

- Ecosystem service change in response to land use/Land cover change in Lake Tana and Southern Tekeze sub-basins and its impact on the livelihoods of the population
- Assessing the impact of Climate change on land resources and food security in Lake Tana and Southern Tekeze Sub-basins
- Vulnerability Analysis and Mapping of Poverty and Food Insecurity: in Lake Tana and southern Tekeze Basins

Research Topics...

❖ MU

- Spatial Data Infrastructure (SDI) and Web-based GIS System for Integrated River-basin Management
- GEOS Application for Water Resources and Environmental Risk Assessment towards Achieving Food Security in the Northern Ethiopia
- Seasonal and Sub-seasonal Weather and River flow prediction for Northern Ethiopia
- Water Resources and food security vulnerability to land use/land cover & climate change impacts in Tekeze ungauged basin, Northern Ethiopia



Thanks for your attention

